

---

# EXTRACTS

---

fried contemporary is proud to present an exhibition by karin preller

# EXTRACTS | KARIN PRELLER

9 june - 23 july 2016

Conceptually and thematically, the paintings exhibited on Extracts form part of a body of work presented in a number of solo exhibitions starting with Family Album at the ABSA Gallery in 2001. In the paintings, Preller explores relationships between painting, photography and memory through the prism of family snapshots and stills from home movies mainly of the 1960s and 1970s. All of the paintings are autobiographical; a personal history archived as photographs and film, revisited and 're-presented' in paint.

The innocuous banality of the images is deliberate but also reflective of the selective and fragmented nature of the 'family album'. They register a childhood characterised by 'innocence' and by the inertia of the white middle class of that era; of events and outings and office parties, mediated through the lens of the camera. But however personal, they cannot be removed from the context into which they are always inscribed.

Never overtly ideological, the paintings become visual manifestations of identity constructed within the framework of a particular historical context; the absences and omissions arguably more palpable in the painted image than in the snapshot.

The interaction between painting and photography is pivotal to Preller's work. Caught disquietedly between painted and photographic layers, painted surfaces reveal their potential as signifiers of uncomfortable complicities and a 'charmed life'. While the source material was compelling, it was ultimately the process of painting that allowed understanding and internalisation of working with photographs and painting; personal and collective memories.

"Extracts' refer both to the photograph or film still as extracted/abstracted from a narrative that can never be fully recovered. But it also refers to 'extracts' from the body of work (in the form of

paintings) that Preller has repeatedly revisited, dissected and re-examined. The process of selection involved photographs in which some detail – of a place, an event, a person – struck a chord; a gesture or a glance, a technical rupture in the photograph that defined remembrance of people or places.

## KARIN PRELLER

Karin Preller is a Johannesburg based artist and writer. She obtained the degrees B Proc and LL B at the Rand Afrikaans University (now the University of Johannesburg) and practiced law before pursuing a career in art. After completing a BA Fine Arts (with distinction) at Unisa and an MA Fine Arts (with distinction) at the University of the Witwatersrand, she lectured in art history at Unisa and other tertiary institutions. She is currently a full-time artist.

Preller has exhibited consistently since the completion of her Master's degree in 2001 and has had a number of solo exhibitions: Family Album at ABSA Gallery in 2001; Snapshots at Gordart in 2007, Aperture at Fried Contemporary in 2008, Stills at Artspace in 2009, City and Suburban at the Standard Bank Gallery in 2010; Just above the Mantelpiece at

Artspace (now Lizamore and Associates) in 2013 and Stilled Lives at Lizamore & Associates in 2015, amongst others. Her work is represented in various corporate collections. These include The Johannesburg Art Gallery, Sasol, ABSA, Unisa, Oliewenhuis Art Museum, The Public Protector, ATKV and the Standard Bank.

KARIN PRELLER



*After dinner.*  
2016.  
Oil on canvas.  
60 x 70 cm

KARIN PRELLER



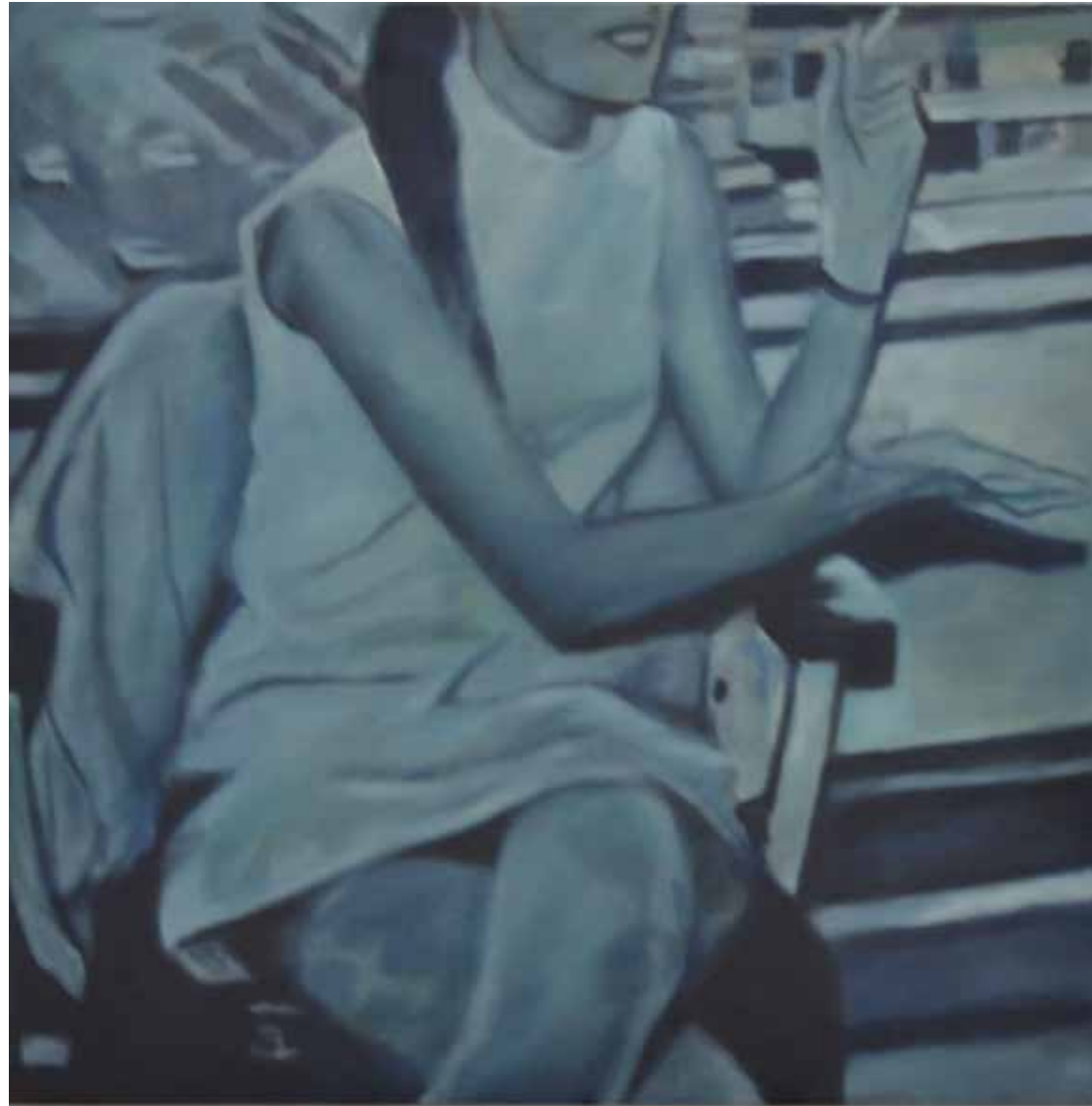
*Function, 1960s.*  
2016.  
Oil on canvas.  
110 x 110 cm

KARIN PRELLER



*Whispering,*  
2016.  
Oil on canvas.  
60 x 70 cm

KARIN PRELLER



*The unofficial party.*  
2016.  
Oil on canvas  
85 x 85 cm

KARIN PRELLER



*Dishing up.*  
2016.  
Oil on canvas,  
95 x 95 cm



KARIN PRELLER



*Karin.*  
2015.  
Oil on canvas  
95 x 95 cm

KARIN PRELLER



*On the farm.*  
2015.  
Oil on canvas  
70 x 60 cm

KARIN PRELLER



*Red Jersey,*  
2015.  
Oil on canvas  
70 x 60 cm

KARIN PRELLER



*Posing.*  
2015.  
Oil on canvas  
70 x 60 cm

KARIN PRELLER



*Family.*  
2015.  
Oil on canvas  
70 x 60 cm

KARIN PRELLER



*Montgomery Park I,*  
2015  
Charcoal and pastel,  
50 x 70cm

KARIN PRELLER



*Montgomery Park III,*  
2015  
Charcoal and pastel,  
50 x 70cm

KARIN PRELLER



*Montgomery Park IV,*  
2015  
Charcoal and pastel,  
50 x 70cm



f r i e d  
c o n t e m p o r a r y

Fried Contemporary  
1146 Justice Mahomed Str (formerly 430 Charles Str)  
Brooklyn Pretoria 0181  
T: 012 346 0158  
e: [info@friedcontemporary.com](mailto:info@friedcontemporary.com)  
[www.friedcontemporary.com](http://www.friedcontemporary.com)